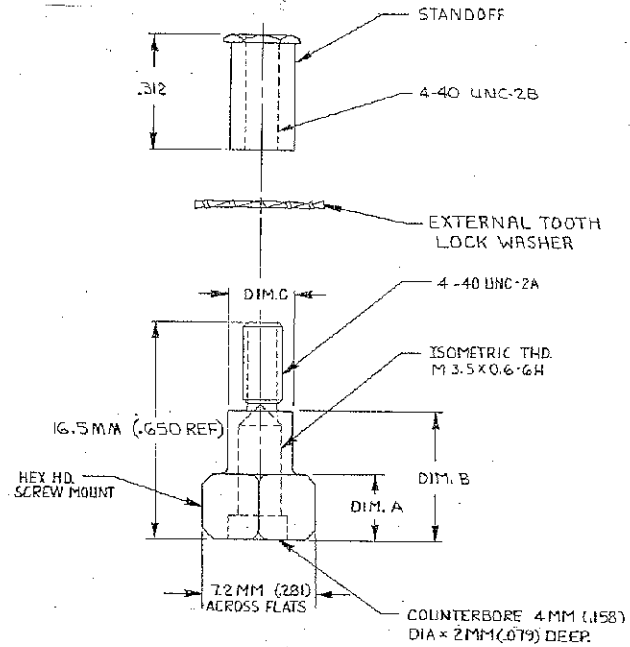


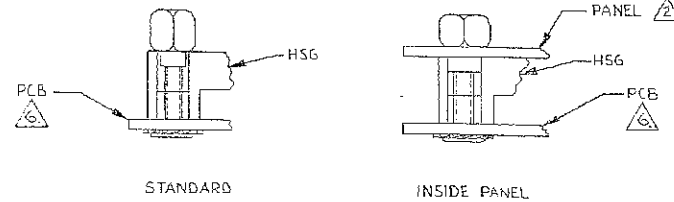
© COPYRIGHT 1978 BY AMP INCORPORATED, HARRISBURG, PA.  
 ALL INTERNATIONAL RIGHTS RESERVED. AMP INCORPORATED PRODUCTS  
 COVERED BY U. S. AND FOREIGN PATENTS AND/OR PATENTS PENDING.

| REVISIONS |   |      |     | LOC                      | DIST    |          |
|-----------|---|------|-----|--------------------------|---------|----------|
| P         | F | ZONE | LTR | DESCRIPTION              | DATE    | APPROVED |
| G         |   |      | G   | REV: ECN AA-5814         | 3-10-79 | LHS      |
|           |   |      | H   | 085: -2; EC 0515-0015-03 | 4-17-79 | DP RM    |



- PARTS SHIPPED UNASSEMBLED.
- MTG HOLE IN PANEL SHALL BE .189 DIA.
- ALL DIM SHOWN ARE FOR REF ONLY.
- DIM SHOWN IN PARENTHESIS ( ) ARE IN INCHES.
- MATL: STUD MOUNT STANDOFF-CARBON STEEL, BLACK OXIDE COATED; SELF CLINCH STANDOFF-STAINLESS STEEL.
- HOLE IN PC BOARD SHALL BE .171 TO ACCOMMODATE STANDOFF.

SUGGESTED APPLICATIONS



| OBSELETE | INSIDE PANEL | 4.7 MM (.185) | 8.5 MM (.335) | 4.9 MM (.193) | 552767-2 |
|----------|--------------|---------------|---------------|---------------|----------|
|          | STANDARD     | 4.2 MM (.165) | 8.6 MM (.339) | 6.5 MM (.256) | 552767-1 |
|          | MTG TYPE     | DIM. C        | DIM. G        | DIM. A        | PART NO  |

|  |   |   |               |              |
|--|---|---|---------------|--------------|
| UNLESS OTHERWISE SPECIFIED DIMENSIONS ARE IN INCHES.<br>TOLERANCES ON:<br>DECIMALS ± .01<br>ANGLES ± .1° | CONTRACT NO   | AMP INCORPORATED<br>Harrisburg, Pa.         |               |              |
|  | DRD<br>CHK<br>APPD<br>APPD<br>OSGN APPD<br>OTHER APPD | NAME<br>KIT, SCREWLOCK,<br>VERT MTG, METRIC |               |              |
| MATERIAL   | DRD<br>CHK<br>APPD<br>APPD<br>OSGN APPD<br>OTHER APPD | SIZE  | CODE IDENT NO | DRAWING NO   |
| FINISH   | DRD<br>CHK<br>APPD<br>APPD<br>OSGN APPD<br>OTHER APPD | C   | 00779         | 552767       |
|  |   | SCALE                                       | 4-1           | SHEET 1 OF 1 |